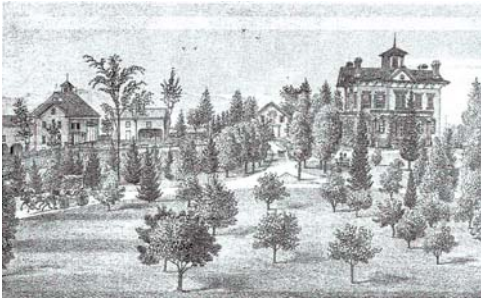


PRIVATE RESIDENCE

Schematic Landscape Master Plan
Kinderhook, New York

Project Data

Date: 2009
Size 12 acres
Context: Historic farmstead in
Kinderhook, New York



1878 Lithograph – eastern facade



Western and southern facades under restoration (EDC, 2009)

Project Description:

This historic 1858 house with many Victorian-era embellishments sits on 20 acres of land overlooking 268 acres of surrounding agricultural fields and apple orchards. The house, barns, outbuildings, and immediate landscape have been changed over time to accommodate various needs of the different owner's. However, the majestic setting overlooking fields to the west and historic designed gardens to the south survive indicating earlier times when farmhands and gardeners maintained such country estates. The present owner has restored the main house and sensitively updated many of its features and necessities while retaining and improving its heritage and character.

EDC, with Anne Wellington, was hired to prepare a Schematic Landscape Master Plan for 12 acres immediate around the main house and barn complex. After carefully assessing the landscape to develop an understanding of the site's existing conditions and historical components, we prepared 3 Schematic Design Alternatives that illustrated the client's program in different and meaningful ways. Each plan was presented and then select features from each were chosen for inclusion into the Final Schematic Landscape Master Plan. The program for this master plan included improving the arrival sequence and parking for owner and guests, a new garage, relocation of existing swimming pool, establish a kitchen garden near the back/kitchen door, identification of inappropriate plantings, new plantings, apple orchard in-fill, new tennis court, highlight and enhance western views, and a fenced-in yard for two active dogs.



Schematic Landscape Master Plan