

FREDERIC C. ADAMS PUBLIC LIBRARY

Site Assessment & Feasibility Study
Kingston, Massachusetts

Project Data

Date: 2001

Size: 0.9 acre

Context: Historic village, south of Boston

Project Program:

- Photographically document existing site conditions
- Site assessment (inventory, analysis & evaluation)
- Schematic design alternatives resulting in final design
- Budget projections

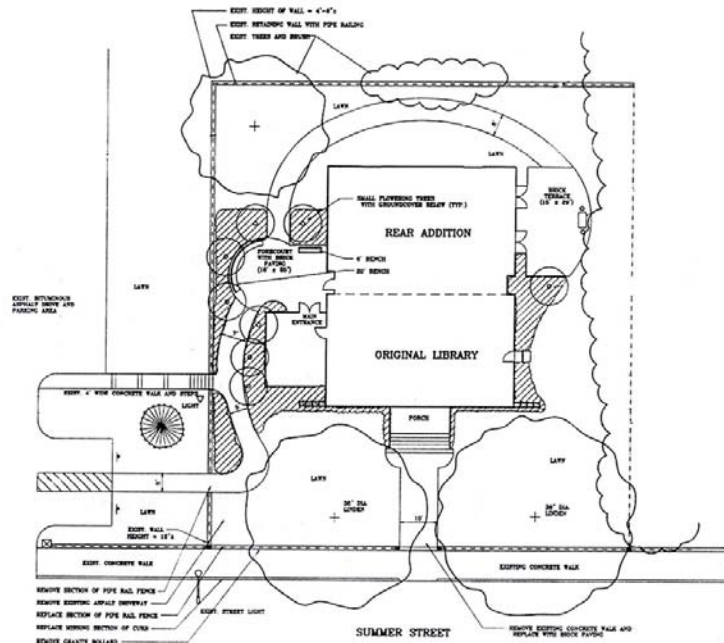


Existing condition photographs

Project Description:

In 1898, Joseph Everett Chandler, a well-known Boston architect, designed the Frederic C. Adams Public Library in the Colonial Revival style. The building exhibits classic features of the style including a brick façade with white painted trim, an elevated front entry with four large columns, and a symmetrical design. In 1964, an addition was added to the rear of the building. The library was in continual use until 1994, when a new public library was built across the street. While the new addition was designed in the current or modern style, it was sensitively located to the rear of the building, thus preserving its original character from Summer Street. Since 1994, the building has housed a few town offices in the lower level, while the main floor remained vacant.

Elmore Design Collaborative, Inc. (EDC) was hired as part of a large consulting team to assess the site's existing conditions and prepare several schematic design alternatives. The designs are feasibility studies for a proposed museum and performance/exhibition facility. EDC worked closely with Turk, Tracey & Larry Architects, Lead Consultant, to carefully develop each schematic design to support the architect's proposed improvements to the building. Each design included the removal of all on-site parking to the adjacent property, the removal of all inappropriate plantings, ADA and universal access, multi-seasonal plantings, an outdoor entry court with seating, special paving that celebrates the new entrance, and a paved terrace for outdoor activities on the far side of the building. The final design includes a combination of features from several of the schematic designs.



Schematic Design Alternative