

**CONNECTICUT RIVER
PARKLINK CORRIDOR**
Physical Master Plan
Turners Falls, Massachusetts

Project Data

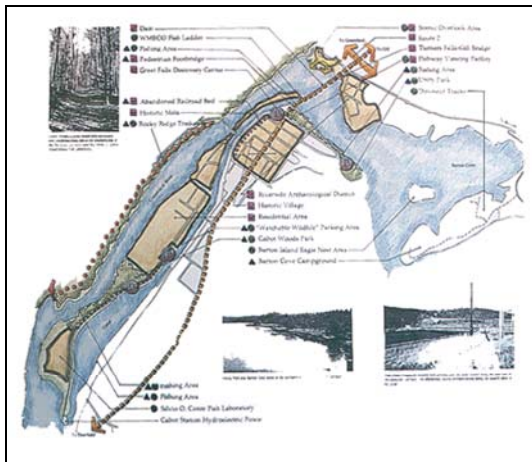
Date: 1998
Size: 2.3 miles long
Context: Historic Village of
Turners Falls, Massachusetts

Project Description:

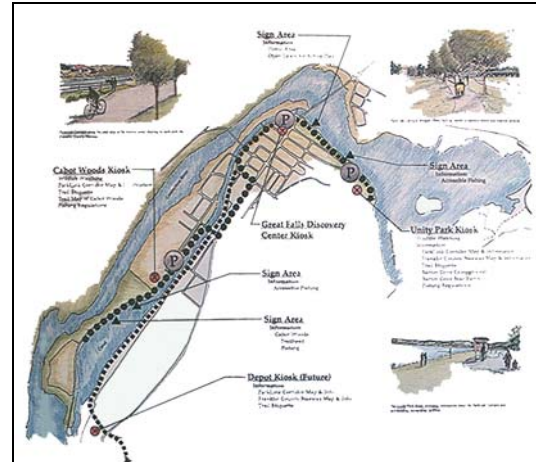
The Physical Master Plan for the ParkLink Corridor creates a continuous thread along the 2.3 mile Connecticut River shoreline within the historic Village of Turners Falls. The corridor links over 50 historic, cultural, archaeological, natural and recreational sites that highlight the areas dynamic history. Recommendations include creating three information kiosks, interpretive signs at several pull-off and overlook areas, enhanced hiking trails, and an ADA-compliant paved pathway suitable for pedestrians, bicyclists, and other non-motorized users.

The Master Plan links and interprets the resources within a concise full-color promotional booklet.

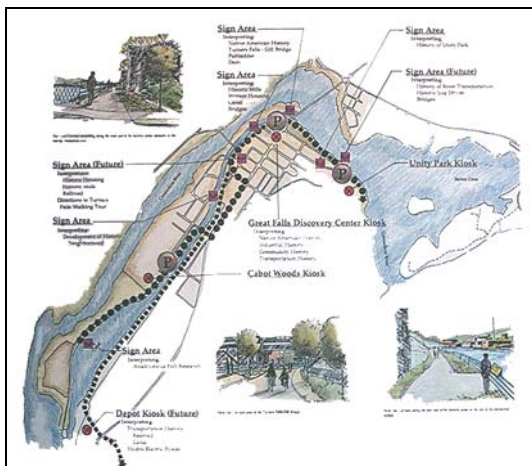
EDC Principal Thomas Elmore was Principal-In-Charge and Co-Project Manager while with another firm.



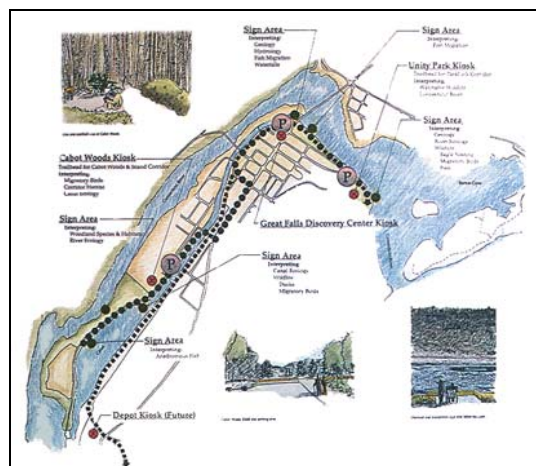
Inventory & Assessment



Recreational Resources



Cultural & Industrial History Resources



Natural History Resources